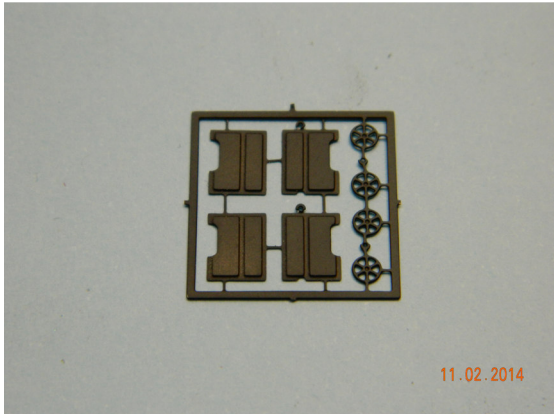


Badger Models FO end plates.

Contents 1 etch.

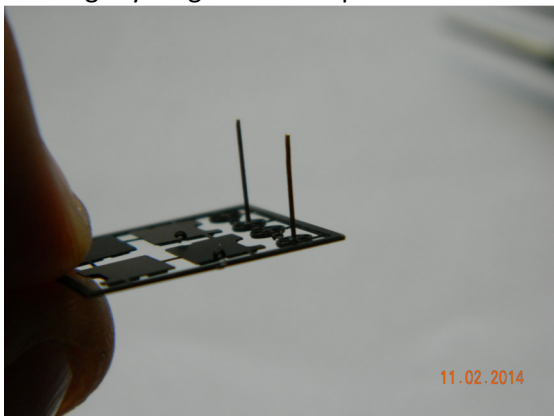
Extras you will need 0.3mm wire and paint.



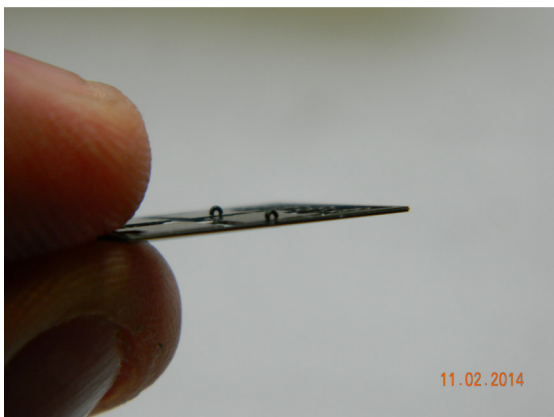
Suggest pre-painting etch before cutting.

As you see there are extra brake wheels in case you lose one.

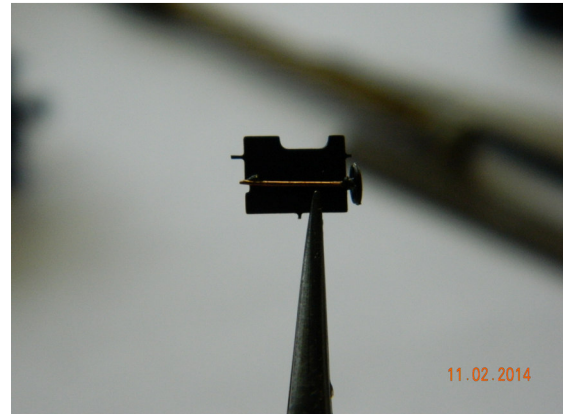
You may need to drill out the centre of the brake wheel with a 0.3mm drill to accept the wire. Cut a length of wire slightly longer than the panel.



Super glue the wires to the brake wheel.



This next part is a bit delicate. You need to carefully fold the loops on the top of the etch away from the side that has the ½ etch grooves in it. Be gentle.



Carefully work the wire through the loop.

Super glue in place.

Trim up any rough edges on the etch. Once the glue is dry carefully file the wire back level with the bottom of the etch.



There is no need to do any modifications to the FO. The ½ etch grooves fit over the existing handrails. Carefully super glue in place.



All that is left to do is gloss coat and add the set numbers. Dull coat when decals are dry.